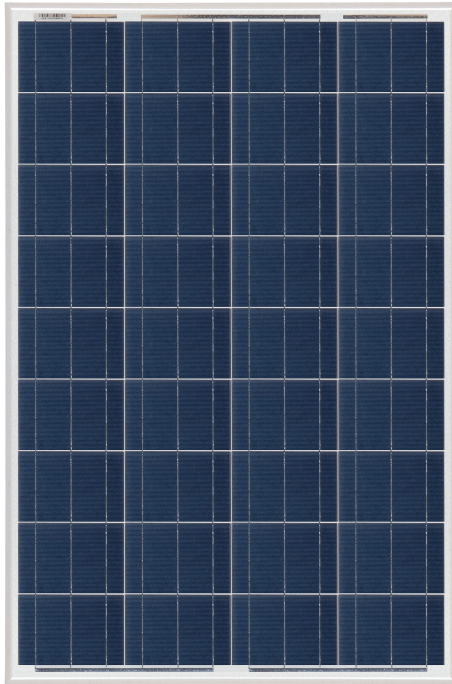




IGNITE THE POWER OF NATURE

Polycrystalline Module --small size 100Watt

Model (RD100TU-18P) Specifications

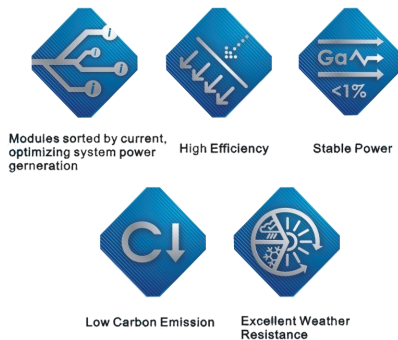


Electrical Data

Maximum Power(W)	100W
Optimum Power Voltage(Vmp)	19.12V
Optimum Operating Current(Imp)	5.23A
Open Circuit Voltage(Voc)	22.68V
Short Circuit Current(Isc)	5.60A
Cell Efficiency	17.46%
Module Efficiency	14.90%
Tolerance Wattage	0~+3%
NOCT	47°C +/-2°C

Benefits

- ☐ High efficiency solar cells with high transmission and textured glass are delivering high efficiency for modules;
- ☐ Bypass diode minimizes the power drop caused by shade;
- ☐ Tempered glass, EVA resin, and weatherproof film, plus aluminum frame for extended outdoor use;
- ☐ Modules independently tested to ensure conformance with certification and regulatory standards;
- ☐ Manufacturing facility certified to ISO 9001 quality management system standards.



Applications

- ☐ On-grid residential roof-tops
- ☐ On-grid commercial/industrial roof-tops
- ☐ Solar power stations
- ☐ Other on-grid applications

Temperature Coefficients

Temperature Coefficients of Isc(%)/°C	+0.04
Temperature Coefficients of Voc(%)/°C	-0.38
Temperature Coefficients of Pm(%)/°C	-0.47
Temperature Coefficients of Im(%)/°C	+0.04
Temperature Coefficients of Vm(%)/°C	-0.38



IGNITE THE POWER OF NATURE

Polycrystalline Module --small size 100Watt

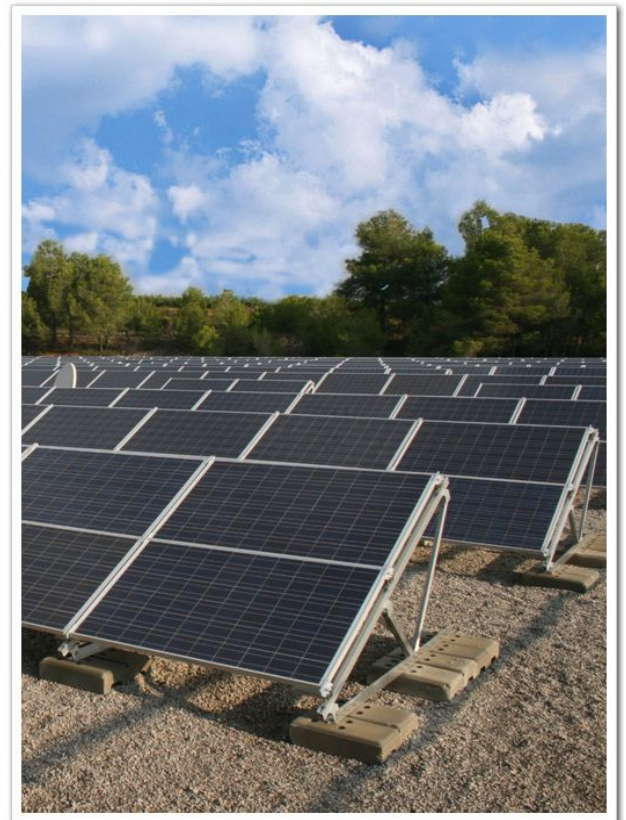
Components & Mechanical

Solar Cell	156*104 Poly
Number of Cell(pcs)	4*9
Size of Module(mm)	1005*668*35
Front Glass Thikness(mm)	3.2
Surface Maximum Load Capacity	2400-5400Pa
Allowable Hail Load	23m/s ,7.53g
Weight Per Piece(KG)	8
Bypass Diode Rating(A)	10
Frame(Material Corners,etc.)	35#
Temperature Range	-40°C to +85°C
FF (%)	70-76%
Standard Test Conditions	AM1.5 1000W/m ² 25°C

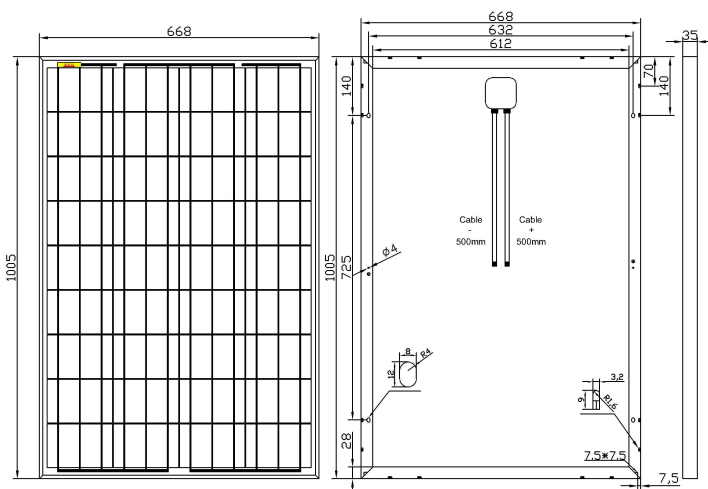
Packing

Packing	Wooden Box
Pieces per container	30pcs/Pallets

Project Picture



Engineering Drawings



©2016 NINGBO RENELED NEW ENERGY CO.,LTD. All rights reserved.
Specifications included in this datasheet are subject to change without notice.



NINGBO RENELED NEW ENERGY CO.,LTD.
ADD: No. 35 Jintong Road, Binhai Industrial Park,
Xiangshan County, Ningbo, 315700, China
TEL: 0086 (0)574 65893072
FAX: 0086 (0)574 65786317